

Quaternary Resource Investigations, L.L.C.

Houston Office

17041 El Camino Real, Suite 200
Houston, Texas 77058
Ph. (281) 286-4603
Fax (281) 286-4604

Dallas Office

3809 Camino Drive
Plano, Texas 75074
Ph. (972) 979-0847
Fax (225) 292-1404

Corporate Office

13588 Florida Boulevard
Baton Rouge, Louisiana 70819
Ph. (225) 292-1400
Fax (225) 292-1404
web site: www.qri.com

Please call any of the knowledgeable QRI employees listed below for solutions to your sampling needs and for price quotes.

Kenny New - knew@qri.com

Diane McKey - dsta@qri.com

Nina Goodrich - ngoo@qri.com



Oil on Spartina Grass

Flood Water Team



Sediment Sampling Team



Emergency Response Team

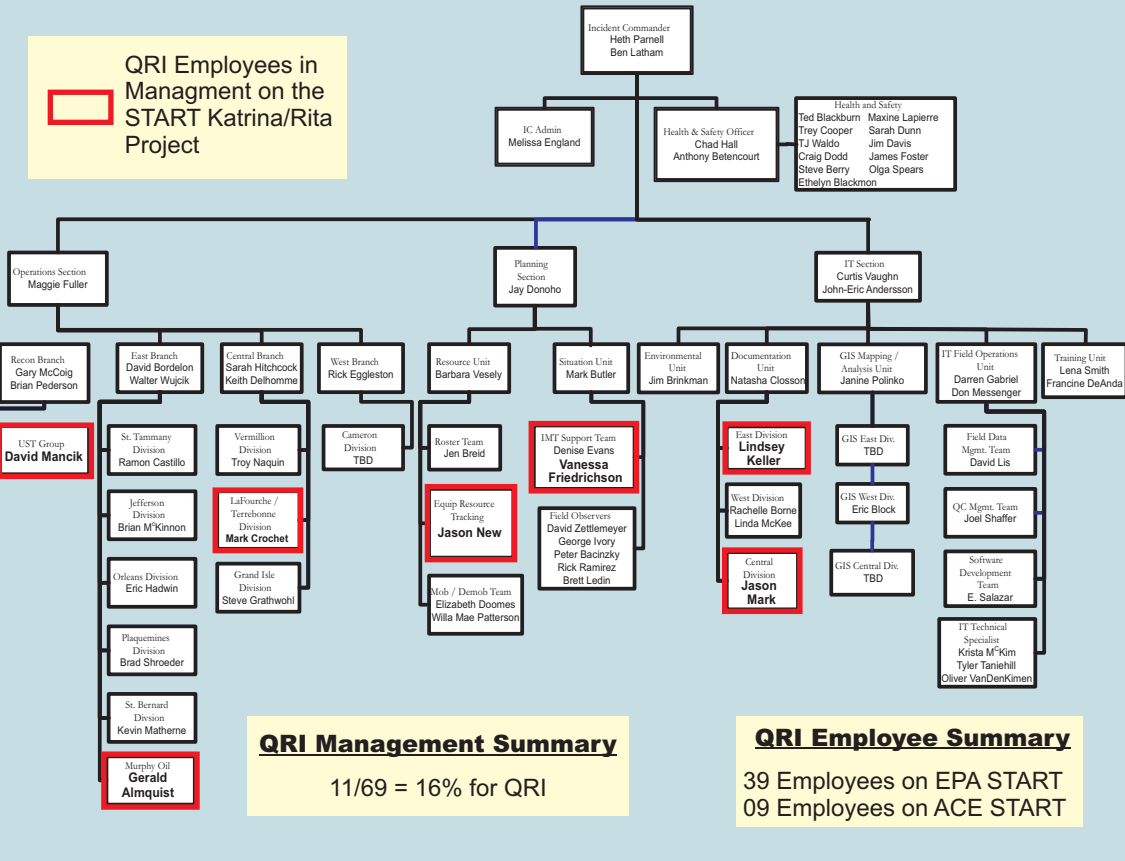


Incident Command
Health & Safety
Admin/Finance
Operations
Planning
Logistics
IT



NAICS Code #561210
Facilities Support Services

QRI Employees in Management on the START Katrina/Rita Project



QRI Management Summary
11/69 = 16% for QRI

QRI Employee Summary
39 Employees on EPA START
09 Employees on ACE START



Drinking Water Team



Outfall Sampling Team



Orphan Container Team

QRI has had a total of 51,250 man-hours from September 10, 2005 through May 5, 2006 as a subcontractor to TechLaw and Ecology & Environment on the EPA START 6 contract via Weston and the USACE Tulsa District in response to Hurricanes Katrina-Rita. QRI has had a monthly average of 28 employees tasked with both tactical and support assignments in the ICS Chain of Command. QRI has had and has

personnel in all four branches (Operations, Planning, Logistics, Admin/Finance) of the ICS Chain of Command on Hurricanes Katrina and Rita. QRI personnel have and are directly overseeing response activities, workers and public safety such as removal of orphan containers, disposal of household hazardous waste and oversight of the Murphy Oil Spill.



Household Hazardous Waste Collection Team



Hazard Recon Team

Quaternary Resource Investigations, LLC

USSBA 8(a) • USSBA 8(m) • USSBA SDB • USWBE • LADBE • TXHUB • Houston W/DBE • Dallas-Fort Worth W/DBE

*Government and Industry in Harmony
with the Environment*



HTRW / Environmental / Consulting • Drilling • Geophysical • ER / Remediation • Construction



Who We Are

Founded in 1986 / 84 staff / 9 offices

- Founded in Baton Rouge, Louisiana, QRI has over 25 years of experience providing environmental consulting, drilling, geophysical, emergency response / remediation and construction services.
- QRI has won over 60 Federal contracts in the past 6 years, and is currently managing projects for the US Army Corps of Engineers, the GSA, the US Geological Survey, the US Coast Guard and the US Navy.
- QRI is a Woman-Owned, SBA 8(a), Small Disadvantaged Business.
- Our staff of professional project managers, geologists, engineers and technicians are experienced, trained and certified.
- QRI has performed over 4,000 environmental projects for Government and Commercial clients with excellent results across the US – with our primary business performed along the Gulf Coast.
- QRI has performed projects for various clients at the following types of facilities: government, industrial, healthcare, construction and remediation sites, refineries, plants, retail shopping centers and streets and highways.



QRI Office Locations



HTRW / Environmental / Consulting • Drilling • Geophysical • ER / Remediation • Construction



NAICS Codes and Services

QRI performs services in the following NAICS codes:	
236118	Residential Remodelers
232660	Commercial and Institutional Building Construction
236220	Commercial and institutional building construction
237210	Land Subdivision
237310	Highway, Street, and Bridge Construction
237990	Other Heavy and Civil Engineering Construction
238110	Poured Concrete Foundation and Structure
238150	Glass and Glazing Contractors
238220	Plumbing, Heating, and Air-Conditioning Contractors
238320	Painting and Wall Covering Contractors
238350	Finish Carpentry Contractors
238910	Site Preparation Contractors
238990	All Other Specialty Trade Contractors
314912	Canvas and related product mills
332919	Other metal valve and pipe fitting manufacturing
332999	All other miscellaneous fabricated metal product manufacturing
335312	Motor and generator manufacturing
336611	Ship building and repairing
423310	Lumber, Plywood, Millwork, and Forestry Machinery
423740	Refrigeration equipment and supplies merchant wholesalers
532412	Construction, Mining, and Forestry Machinery and Equipment Rental

541330	Engineering Services
541340	Drafting Services
541360	Geophysical Surveying and Mapping Services
541370	Surveying and Mapping (except Geophysical)
541430	Graphic Design Services
541618	Other Management Consulting Services
541620	Environmental Consulting Services
541712	R & D in the Physical, Engineering, and Life Sciences
561210	Facilities Support Services
561730	Landscaping Services
562111	Solid Waste Collection
562119	Other Waste Collection
562910	Remediation Services
811219	Other Electronic and Precision Equipment Repair and Maintenance
811310	Commercial and industrial machinery and equipment (except automotive and electronic) repair and maintenance

Summary of QRI Federal Prime Contracts 2007-2012

Summary of QRI's Federal Prime Experience (2007 – 2012)

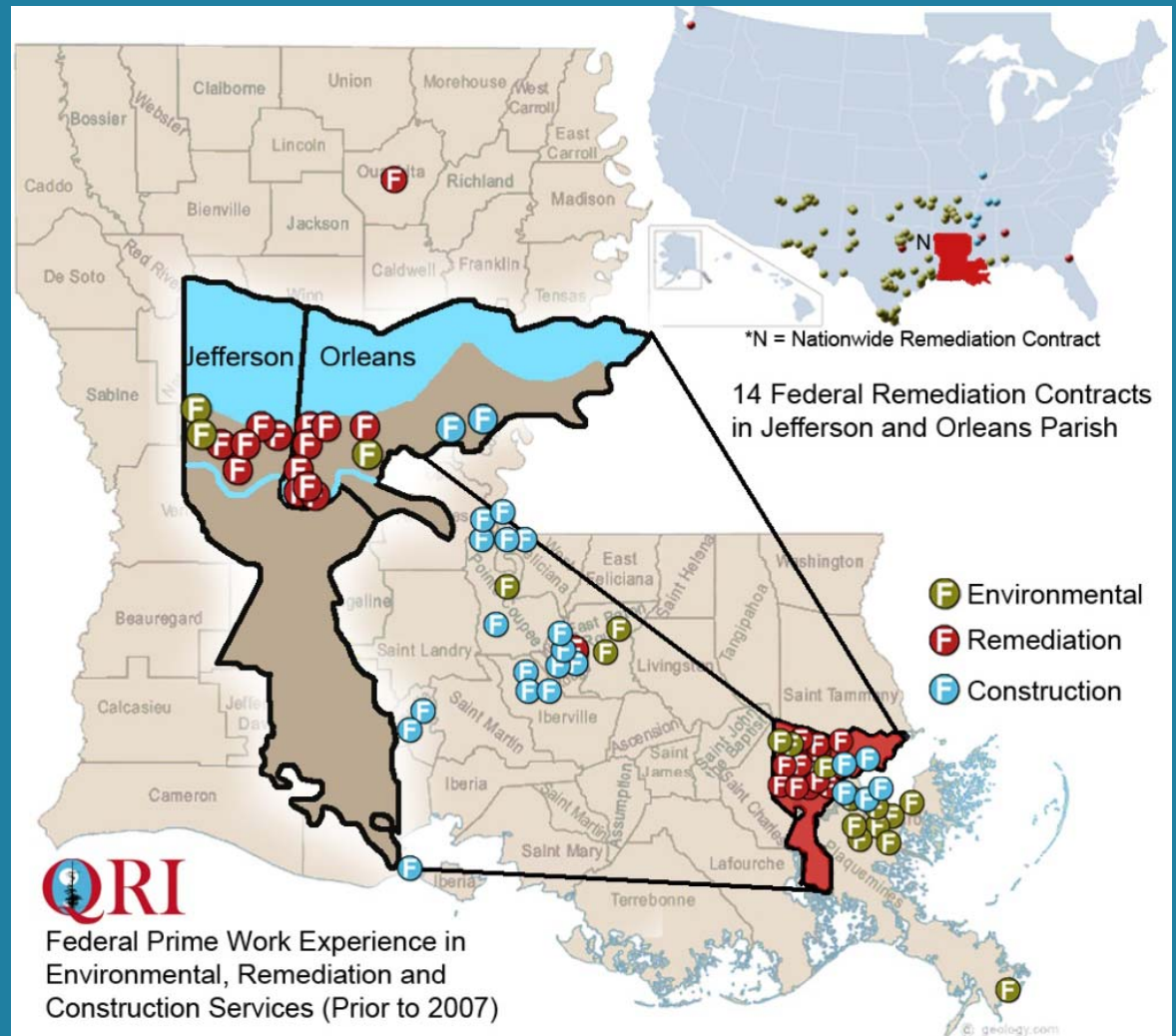
QRI has been awarded **63** prime contracts with **271** task orders valued at **\$260,323,899** in 5 different NAICS series with performance ratings to date of 6 Outstanding CCASS, 1 Excellent ACASS, 1 Above Average CCASS and the 2011 Superior Safety and Construction Performance Award for USACE, MVM.

Type of Work	Remediation / Emergency Response	Construction / Earthwork	Environmental / Consulting
NAICS SERIES	<i>562 NAICS Series</i>	<i>236-237-238 NAICS Series</i>	<i>541 NAICS Series</i>
Contract Value	<i>\$236,924,010</i>	<i>\$13,366,002</i>	<i>\$10,033,887</i>
Prime Contracts	18 (161 TOs)	33 (42 TOs)	12 (68 TOs)
Dept. / Agencies	1 → DOD, NAVFAC, SE 1 → DOD, USACE, HPO 9 → DOD, USACE, MVN 1 → DOD, USACE, NWS 3 → DOD, USACE, RFO 1 → DOD, USACE, SWF 1 → DOD, USPFO, LA 1 → DOI, NPS	3 → DOD, USACE, MVM 24 → DOD, USACE, MVN 4 → DOI, NPS 2 → DOI, USGS	1 → DHS, FEMA 4 → DHS, USCG, FL 1 → DHS, USCG, RI 1 → DOD, USACE, MVK 2 → DOD, USACE, MVN 2 → DOI, NPS 1 → PBS, GSA/PBS, R7 1 → FAS, GSA/FSS, R7

Federal Contracts 2007-2012

QRI has won 63 Federal prime contracts within the last 5 years:

- 44 U.S. Army Corps of Engineers (MVN, RFO, HPO, MVM, MVK, NWS and SWF)
- 7 National Park Service
- 5 U.S. Coast Guard
- 2 GSA
- 2 USGS
- 1 FEMA
- 1 National Guard
- 1 US NAVY



Environmental / HTRW / Consulting Services

Founded in 1986, QRI's Environmental / HTRW / Consulting Division performs the following services:

- Biological Resource Assessments
- CATEX
- Coastal Geology Investigations
- Cultural Resource Assessments
- Environmental Impact Statement (EIS)
- Environmental Site Assessments (ESA)
- Environmental Damage & Risk Assessments
- Groundwater Classification
- Interpretive design
- National Environmental Policy Act (NEPA)
- Oil Pollution Act (OPA)
- Regulatory Compliance for soil-waste-ground water
- Threatened and Endangered Species
- Wetland Delineations – Mitigation





GSA IDIQ Environmental Services

QRI has conducted 49 task orders (TO) under this GSA IDIQ Environmental Services Contract. To date, these services have involved 79 Federal properties and/or buildings in 5 states conducting: 33 Environmental Consulting Projects, 5 Environmental Assessments (EA), 6 Environmental Impact Statements (EIS), and 5 Environmental Site Assessments (ESA) with on-going interaction with 20 Contracting Officers. All TOs required coordination with government entities and building occupants, and required the ability to manage multiple concurrent TOs in various states within short timeframes.



USACE, MVK IDIQ Environmental Services LA, MS



Under this ID/IQ contract QRI provides a full range of environmental services to the U.S. Army Corps of Engineers, Vicksburg District as identified in individual task orders. The environmental services consist of environmental compliance, environmental investigation and remediation, environmental conservation, pollution prevention, safety and industrial hygiene, and litigation support services. QRI has completed 8 task orders with 1 in progress to perform a Biological Assessment for the BP Deepwater Horizon Oil Spill.



Geophysical

QRI's Geophysical Division was founded in 2004. Our crews can typically mobilize within 24 hours – this prompt mobilization prevents costly construction delays. Pre-excavation identification of utilities prevents losses and saves lives.

Services:

- GPR
- EM Utility Locator
- EM31
- EM61
- Pulser™
- Vacuum Excavation

Subsurface Investigations for:

- Utilities
- Pipelines
- USTs
- Buried debris
- Leaks
- Contaminant plumes



PULSER™

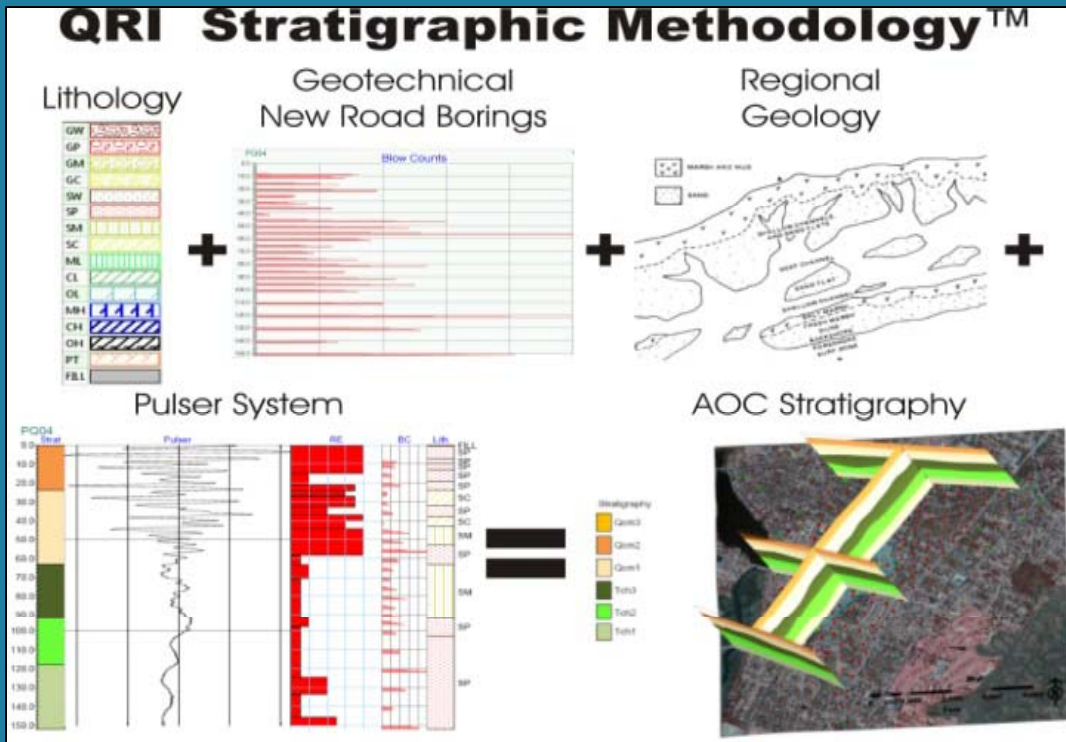
Pulser™ is a non-intrusive geophysical method exclusively developed by QRI for conducting subsurface stratigraphic analysis to a depth of approximately 300 feet below ground surface, with a vertical resolution as low as 2 feet.



Linwood, NJ



Hawthorne, CA



HTRW / Environmental / Consulting • Drilling • Geophysical • ER / Remediation • Construction



Environmental Drilling

Founded in 1987, QRI owns and operates drilling, vibracore and HTAS™ equipment.

Services include:

- Direct Push Technology
- Hollow Stem Augers
- Track-mounted Geoprobe Rigs
- Continuous Soil Sampling
- Groundwater Sampling
- Temporary Wells
- Monitoring Wells
- Plug & Abandon

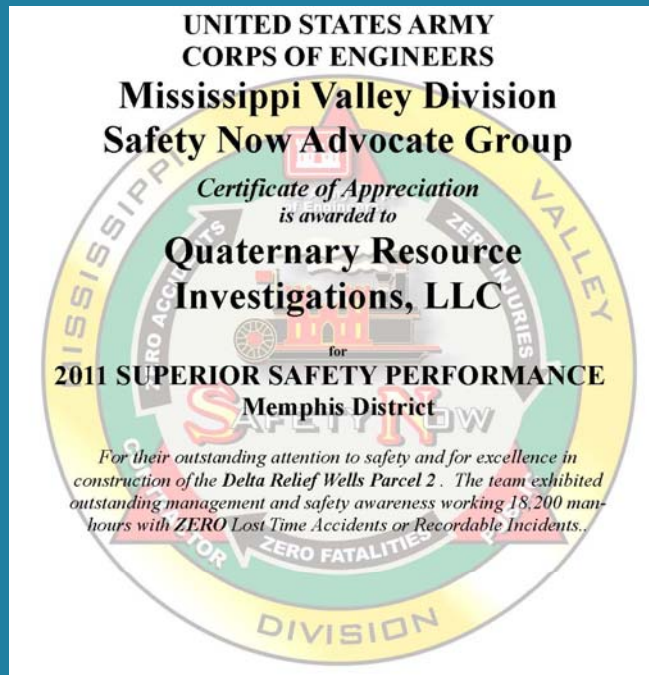
QRI uses vibracore technology custom mounted on barges and boats to access difficult water based sampling environments.



DOD, USACE-MVM, Relief Well Installation



QRI is currently working on its 3rd Installation of Mississippi River Relief Wells in Mississippi & Illinois for the USACE. In 2011 QRI won the Superior Safety Performance award for the Delta Relief Wells.



QRI performed the following types of work for these three (3) consecutive contracts: earthwork, including grading and leveling on levee slopes; establishment of turf, including distributing fertilizer, hydroseeding, and maintaining grass to a height no taller than 3 and 6 inches above; establishment of outlet swales and collector ditches for well operations; erosion protection; establishment of poured concrete pads for wells; site work and surveying; installation of concrete-filled steel pipe guard posts (bollards); installation and testing of pilot holes and relief wells; mobilization and establishment of construction site trailer and lay down yard; demobilization; development of an Environmental Protection Plan; and development of a Site Safety & Health Plan & Quality Control Plan.

HTRW / Environmental / Consulting • Drilling • Geophysical • ER / Remediation • Construction



Emergency Response / Remediation

Founded in 2005, QRI's ER / Remediation Division performs the following services:

- Emergency/Disaster Responses
- Emergency/Oil Spill
- HHW Collection & Disposal
- Quality Assurance/Quality Control
- Soil & Water
- Tree & Debris Removal



Federal ER / Remediation Contracts



DOD, USACE-MVN, Pump Station Canals

Since August 2007, QRI has received (3) three consecutive USACE contracts totaling \$2.2M to provide boom maintenance and emergency response for the 17th Street, Orleans & London Canals in New Orleans, LA. The 3rd contract period ends in December 2015.

QRI was awarded a Nationwide MATOC for Environmental & Remediation Services by the USACE, SWF. Contract period: 07/15/11 – 07/14/14.

QRI was awarded an ACI contract for Removal and Dumpsite Operations in LA, MS and AL by the USACE, MVN. Contract period: 08/21/07 – 03/13/12.

QRI was also awarded an Environmental & Remediation Services contract for the NAVFAC SE Region. Contract period: 12/08/10 – 12/07/15.



DOD, USACE-NWS, Lead and Arsenic Abatement



QRI was awarded a \$4.3M contract for the excavation, disposal and capping of soil in 176 residential yards containing arsenic and lead deposition in the Ruston neighborhood of Tacoma, Washington. The U.S. Environmental Protection Agency (USEPA) issued a Record of Decision for the Ruston/North Tacoma Study Area in June 1993, selecting a remedy for soils in residential and public rights-of-way exceeding 230 parts per million (ppm) arsenic or 500 ppm lead. There were 1,800 contaminated yards due to the ASARCO Smelter located in the area from 1890 to 1985 with 1,624 yards having been remediated prior to QRI's contact. Work under this design-bid-build contract includes:

- Resident coordination
- Sampling
- Excavation of soils containing arsenic and lead
- Remediation support services for the EPA
- Transportation and disposal of CERCLA waste to EPA approved site
- Establishment of turf including distribution of fertilizer
- Hydroseeding
- Sodding
- Landscape restoration
- Preparing all pre and post-remediation documentation



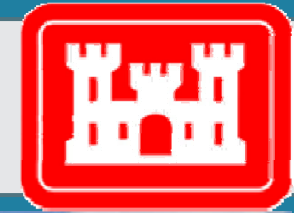
Construction

Founded in 2009, QRI's Construction Division performs the following services:

- Custom Design Build
- Facilities Management
- Historical Restoration
- Interpretative Design
- Green Construction
- Commercial
 - New
 - Remodeling and Additions
- Residential
 - New
 - Remodeling and Additions (Kitchens, Bathrooms and Decks)
- Mechanical
- Storm Proofing & Retrofitting Facilities
- Parking Areas - Concrete, Asphalt or Stone
- Site Work
- Levee Construction and Repair
- Landscape Design



Construction - Federal



DOD, USACE-MVN Port Allen Lockmaster Building

QRI was awarded a contract to construct a new, rigid-frame office building by the USACE, New Orleans District. This two (2) story, 2,176 square foot structure (with porches on both stories) was built on a soil supported concrete slab on top of the levee located adjacent to the Port Allen Lock in Port Allen, LA. The purpose of the building was to create a permanent commercial structure for the Port Allen Lock Master and his staff. It also doubles as a visitor's center with an exhibit room showcasing the Lock and how it works, as well as being a hurricane shelter.



DOD, USACE-MVN Freshwater Bayou Lock Asphalt Paving

At the Freshwater Bayou Lock in Vermilion Parish, Louisiana, QRI repaved the road and parking areas by adding a total of 6" of new aggregate base layer (including existing limestone), 3" of binder course, and 1 1/2" of wearing course and prime/tack coats.



Construction - Federal



QRI has performed Construction Services for the USACE, New Orleans District on 27 contracts; 4 contracts for the National Park Services; and 2 contracts with the US Geological Survey at the following locations:

- Port Allen Lock
- Freshwater Bayou Lock
- Old River Lock
- Old River Lock Auxillary Structure
- Harvey Lock
- District Headquarters
- Bayou Sorrel Lock
- Bayou Dupre Floodgate
- Visitors Center, Shiloh National Military Park
- Basin St. Station Exhibit, Jean Lafitte National Historical Park and Preserve
- Visitor Center and Pemberton's Headquarters, Vicksburg National Military Park
- National Wetlands Research Center, U.S. Geological Survey

Services Performed:

- Repair of HVAC System, USACE MVN Dredge Wheeler
- Construction of structural steel frame building
- Installation of 100KW Diesel powered generator
- Delivery of pressure treated dimensional lumber
- Asphalt Paving
- Assessment and repair of sinkhole in an asphalt parking lot
- Crane Mats
- Blasting tents
- Fire Pump Replacement
- Delivery of sand and earth moving equipment for flood fight 2011
- Manufacture and delivery of Lock Gate Seals
- Installation of HDPE Culvert Pipe
- Repair of Variable Frequency Drivers
- Manufacture and delivery of engine repair parts
- Installation of Programmable Logic Controllers
- Installation of flat wire ropes for bulkhead lowering devices
- Manufacture and delivery of dewatering parts for Bayou Sorrel Lock
- Installation of metal awning and two catch basins
- Repair and delivery of two spuds damaged on barge
- Manufacture and delivery of two drum hoists for lowering carriage for Port Allen Lock
- Manufacture and delivery of a greaseless bushing system for Bayou Dupre Floodgate
- Delivery and erection of scaffolding and jacks for Bayou Dupre Floodgate
- Manufacture and delivery of safety boat for MVN warehouse
- Interpretive Exhibit Fabrication
- Rehabilitation of Historic Structures
- HVAC System Assessment and Redesign

Construction – Commercial / Residential

Remodeling



New Construction



Joint Ventures

- GMI was founded in 1972 in TX / 1393 staff / 86 offices
- Provides Environmental Resources, Cultural Resources, Civil and Facility Engineering Services
- GMI is a wholly owned subsidiary of Applied Research Associates, Inc. with a 27 year history with the DoD and 23 years of contract relationship with USACE, SWF
- GMI and QRI have a SBA Approved 8(a) Mentor\Protégé relationship
- GMI is a lead team member to QRI on their GSA contract for Environmental Surveys and Testing Services in Region 7 (LA, AR, OK, TX and NM)
- GMI is also a team member to QRI on the USACE, SWF MATOC for Nationwide Remediation and Environmental Consulting Services



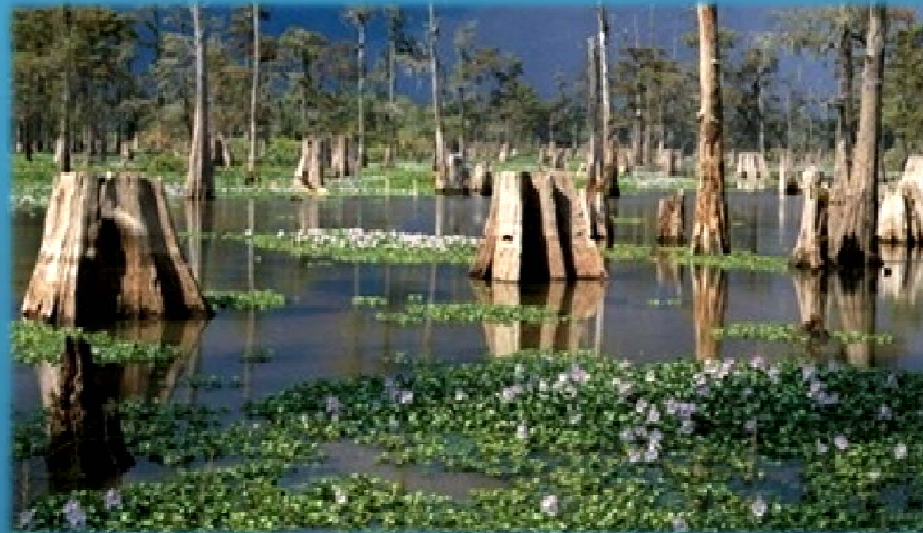
- PPM was founded in 1994 in LA / 106 staff / 16 offices
- Provides services for Soil & Groundwater; Air, Water & Waste Compliance; Due Diligence and Brownfields Redevelopment
- QRI and PPM have a SBA Approved 8(a) Joint-Venture: QRI-PPM Remediation, JV
- The QRI-PPM JV holds a \$3.5M BOA contract for Environmental & Remediation Services with the NAVFAC SE
- QRI and PPM are team members for the St. Tammany Parish Environmental Remediation contract
- PPM is also a team member to QRI on the USACE, SWF MATOC for Remediation and Environmental Consulting Services



Quaternary Resource Investigations, LLC

USSBA 8(a) • USSBA 8(m) • USSBA SDB • USWBE • LADBE • TXHUB • Houston W/DBE • Dallas-Fort Worth W/DBE

*Government and Industry in Harmony
with the Environment*



Contact Information

Corporate Office
13588 Florida Blvd.
Baton Rouge, LA 70819
Ph: (225) 292-1400 Fax: (225) 292-1404

www.qri.com

HTRW / Environmental / Consulting • Drilling • Geophysical • ER / Remediation • Construction

